



LTD100506
Peanut experiment
Summary– short.

November, 2023

LET YOUR GROUND WORK™

Trial LTD100506-Peanuts (Nov 2023)

Method

Pots:

100L

Fertilization:

7-3-7+6+0.5 / 2-8-5+6+0.5

Concentration:

1. rhizobium: 10^9 /nut
2. Rootella L

Analysis: Plants with their roots were extracted from the sand and left to dry for 10 days in the greenhouse prior to analysis

Weight and # of peanuts (dry)

Roots colonization (3 replica)

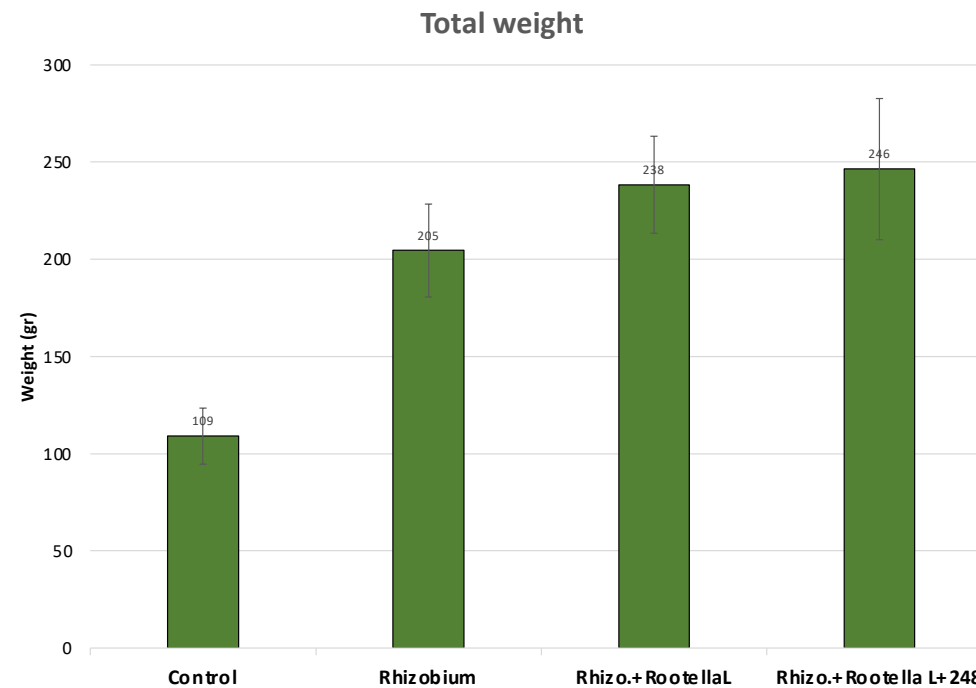
5 months trial



Experimental groups

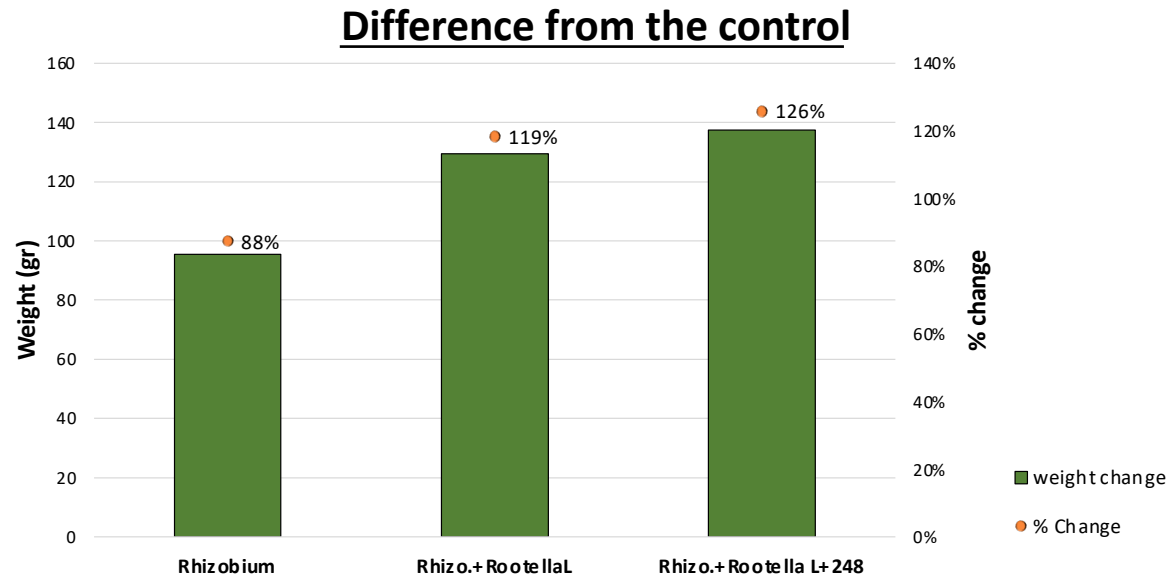
#	Treatments
1	Rhizobium
2	Rhizobium+rootella L
3	Rhizobium+rootella L+248

Results



Increase of 16% in the rhizobium + Rootella L treatment and 20% in the rhizobium + Rootella L treatment+ 248

Results



Increase of 16% in the rhizobium + Rootella L treatment and 20% in the rhizobium + Rootella L treatment+ 248

Results -pictures

Rhizo+Rootella L+ 248



Rhizobium



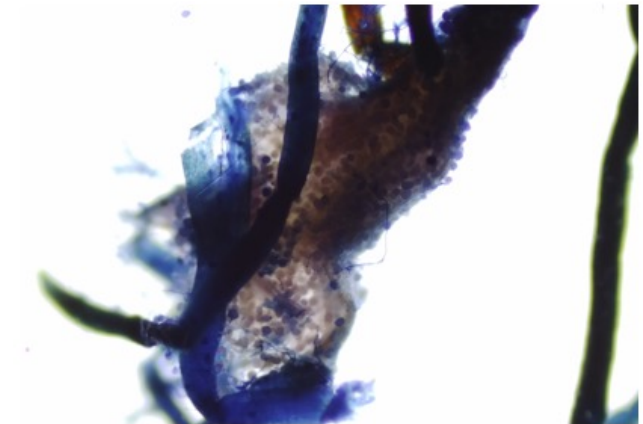
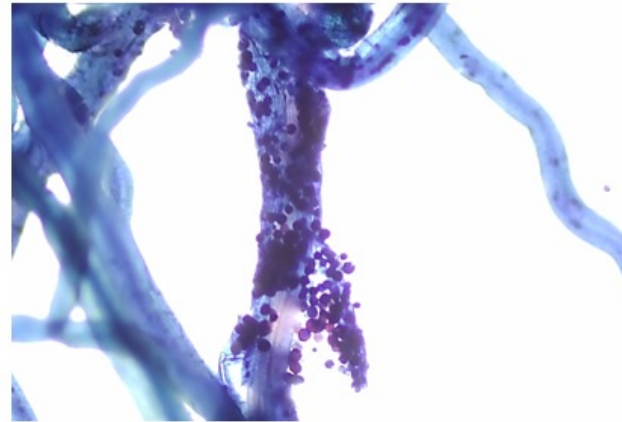
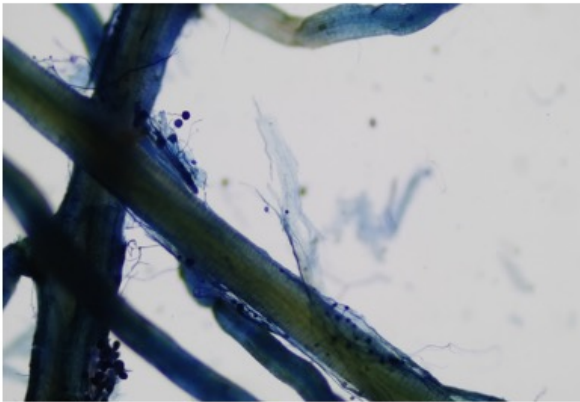
Rhizo+Rootella L



Control



Results – root colonization: root & yield



Conclusions



- Three experimental groups that were higher than the *Rhizobium* treatment are the *Rhizobium*+Rootella L, *Rhizobium*+Rootella L+ 248
- We have reached an increase of up to 20% in the yield in *Rhizobium*+Rootella L+ 248 treatment, compared to the *Rhizobium* treatment